

# Auction

Organised by

Krishnath College, 1 Sahid Surya Sen Road, Berhampore,  
Murshidabad, West Bengal

On

07.09.2018

**Item 1** : 15 Logs (Details attached)

Place: Krishnath College Campus

Time: 12.00 Noon

**Item 2** : Old damaged building (Details attached)

Place : M.M.C. Campus of Krishnath College (Beside Ritwik Sadan)

Time : 2.30 P.M.



Principal  
Krishnath College  
Berhampore (W.B)

Item-1

DETAILS OF LOG MEASUREMENT OBTAINED FROM EUCALYPTUS TREE WHICH WAS BROKEN & FALL DOWN ON 28/08/2018 AT NIGHT PRESENTLY LYING AT THE PREMISES OF THE KRISHNATH COLLAGE CAMPUS, BERHAMPORE, MURSHIDABAD

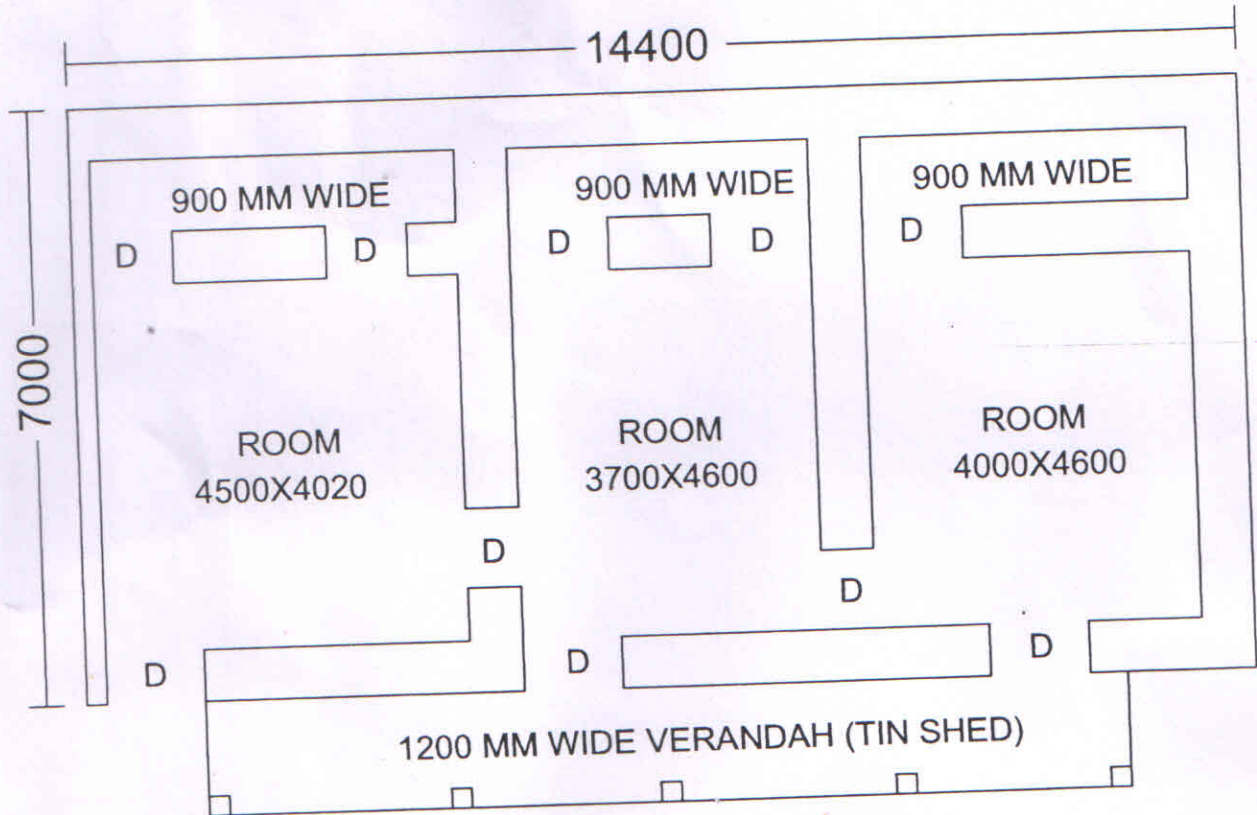
Ref :- No. 33/279/2018-19 dated 29/08/2018.

Sl No of Log	Species	Length of log (L) ( in Meter)	Mid Girth of Log(G) ( in Meter)	Volume in m <sup>3</sup> ( G x G XL /16)	Remarks
1.	Eucalyptus	2.10	2.00	0.525 m <sup>3</sup>	
2.	Eucalyptus	2.70	1.80	0.547 m <sup>3</sup>	
3.	Eucalyptus	2.50	1.80	0.562 m <sup>3</sup>	
4.	Eucalyptus	2.70	1.10	0.204 m <sup>3</sup>	
5.	Eucalyptus	2.30	1.10	0.144 m <sup>3</sup>	
6.	Eucalyptus	2.15	1.00	0.134 m <sup>3</sup>	
7.	Eucalyptus	2.00	0.90	0.061 m <sup>3</sup>	
8.	Eucalyptus	1.40	0.80	0.056 m <sup>3</sup>	
9.	Eucalyptus	1.30	0.75	0.046 m <sup>3</sup>	
10.	Eucalyptus	1.80	0.65	0.048 m <sup>3</sup>	
11.	Eucalyptus	1.90	0.61	0.044 m <sup>3</sup>	
12.	Eucalyptus	1.10	0.61	0.026 m <sup>3</sup>	
13.	Eucalyptus	2.40	0.80	0.096 m <sup>3</sup>	
14.	Eucalyptus	1.30	0.65	0.034 m <sup>3</sup>	
15.	Eucalyptus	1.70	0.62	0.041 m <sup>3</sup>	
<b>TOTAL = 15 Logs =</b>				<b>2.568 m<sup>3</sup></b>	

  
Principal  
Krishnath College  
Berhampore (W.B)

Item 2

OLD AND FULLY DAMAGED BUILDING AT CAMPUS OF MAIN HOSTEL OF KRISHNATH COLLEGE BERHAMPORE, MURSHIDABAD



AREA- 107.28 SQ M

NOTE:-

1. ONLY SOME OF JOIST, WOODEN BEAM AND BARGA ARE PRESENT AT CEILING.
2. APROX 17 NO OLD AND DAMAGED G.C.I.(TIN) SHEET PRESENT THERE.
3. ALL BRICK WORK HAS BEEN DAMAGED, BRICKS CAN BE USED IN SOLING OR IN FOUNDATION ONLY.
4. BRICKS OF FOUNDATION LEVEL CAN BE ALSO USED IN SOLING AND FOUNDATION ONLY.
5. NO DOOR AND WINDOW IS PRESENT AT THERE.

  
Principal  
Krishnath College  
Berhampore (W.B)



## *The Design*

A Civil Engineering consultancy .

Ranibagan Berhampore

Mb 9434115844

OLD AND FULLY DAMAGED BUILDING AT CAMPUS OF MAIN HOSTEL OF KRISHNATH COLLEGE  
BERHAMPORE, MURSHIDABAD.



  
Principal  
Krishnath College  
Berhampore (W.B.)

*The Design*

A Civil Engineering consultancy .

Ranibagan Berhampore

Mb 9434115844

---

OLD AND FULLY DAMAGED BUILDING AT CAMPUS OF MAIN HOSTEL OF KRISHNATH COLLEGE BERHAMPORE, MURSHIDABAD.



*Dr*  
Principal  
Krishnath College  
Berhampore (V)